



# TIDE-GSM Tag

The TIDE-GSM tag collects high resolution dive and behaviour data that is transmitted via the GSM phone network. These tags currently operate on the Quad band networks (GSM/UMTS).

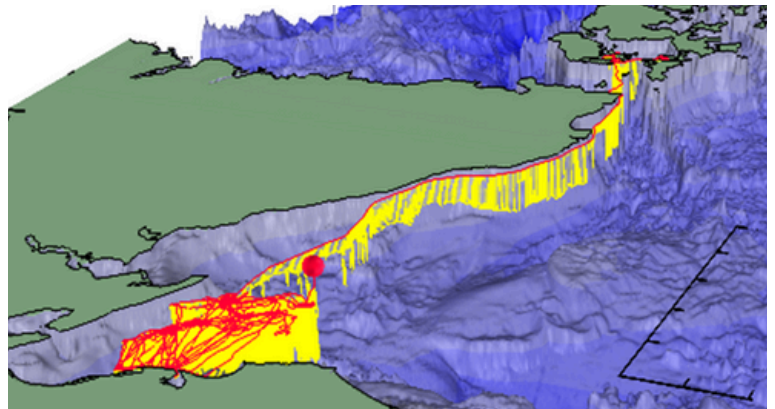
New updates include onboard-processing of 128 Hz accelerometer data to identify Prey Capture Attempts and Swim Effort during each dive.

## Data Products

- Individual dive profiles
  - Defined using a broken stick with up to 18 points.
  - Prey capture attempts, pitch, & swim effort metrics for the ascent, descent, and bottom of each dive.
- GPS Locations
- Haul-out periods
- Summary table of max depths encountered over a 2-hr summary period
- Archived Data
  - TDR data archived at 1 Hz
  - Pitch, Roll, Jerk and Swim Effort archived at 1 Hz

## Specifications

Depth Rating (m)	500
Pressure (dbar)	
Range	0 - 2000
Resolution	0.06
Accuracy	2.5 m @ 1000m
Coverage	Quad band networks (GSM/UMTS)
GPS	Fastloc 3
Accelerometer	128 Hz Sampling
Wet/Dry	Ocean - Fresh Water
Longevity	Up to 1 yr
Dimensions (mm)	102 x 70 x 38
Weight (g)	310



*Individual dive profiles with corresponding GPS track for a harbour seal swimming from the Orkney Islands to the Moray Firth, Scotland*