

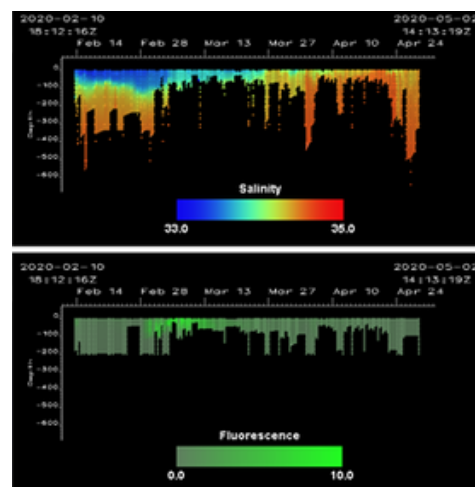
# OCEAN-Fluoro Tag

The OCEAN-Fluoro Tag collects Conductivity-Temperature-Depth (CTD) and Fluorescence profiles, providing information about the environment of the tagged animal during the deployment period. It collects oceanographic profiles using an inductive conductivity sensor, high-resolution temperature and fluorescence sensors, while deployed on marine mammals. Data can be archived on the tag and transmitted via the Argos satellite network.

All transmitted profiles can be submitted to the GTS in near real-time

## Data

- Summary period of 6 hr
- Approx. 4 oceanographic-quality CTD profiles per day
  - Profiles defined using a 16-pt broken stick approximation
    - Min/Max Depth
    - 8 fixed-depth points
    - 6 broken-stick points
- Dive profiles defined using a 4-pt broken stick approximation
- Fluorescence profiles defined with 23 equally-spaced points up to 250 m.
- Light profiles defined with 23 equally-spaced points up to 250 m.



Salinity and fluorescence data from a Weddell seal diving near the Adele Coast, Antarctica.

## Locations

- All locations are transmitted via the Argos satellite system.

## Specifications

Depth Rating (m)	2000	Salinity (PSU)	
Pressure (dbar)		Range	0 - 50
Range	0 - 2000	Resolution	0.002
Resolution	0.05	Accuracy	± 0.01
Accuracy	2 ± 0.01% / K	Light (mol/m <sup>2</sup> )	
Temperature (°C)		Min Detect. Signal	0.000000001
Range	-5 - 35	Max Detect. Signal	2000
Resolution	0.001	Wet/Dry	Ocean - Fresh Water
Accuracy	± 0.005	Longevity	Up to 250 days
Chlorophyll-a (µg/L)		Dimensions (mm)	100 x 70 x 60
Range	0-125	Weight (g)	580 (D-cell), 430 (C-cell)
Min. Detect. Limit	0.066	Data Storage	Full dive history archived on the tag